

PC-Xware

Version 6.0

Delivers X Windows
Emulation for
Microsoft® Windows

NCD PC-Xware® Highlights

- X Windows Emulation on Microsoft Windows Desktops to access X applications servers
- Designed for Windows XP and Windows 2003 Terminal Services with Windows multi-user compatibility
- Connects PC and Thin Client users to X Window applications on any host
- High Performance X Server

X Windows Emulation for Windows Desktops

NCD PC-Xware from ThinPATH System Inc. provides users a simple way to access UNIX, Linux or VMS server-based X Window applications. ThinPATH NCD PC-Xware displays X Windows applications side-by-side with Microsoft Windows applications.

PC-Xware has over 12 years in the market place as a viable and proven product. PC-Xware provides:

- Proven X server reliability & performance
- X11R6 X and Font server support
- Graphical connection manager & keyboard remapping utility
- VT terminal emulation
- Multi-user and X Session support
- Customized options for multi-user administration

Designed for Windows XP & Windows 2003

NCD PC-Xware software from ThinPATH Systems Inc. is designed to be fully compatible with Microsoft Windows XP Service Pack 2 and Windows 2003 Service Pack 1. NCD PC-Xware fully supports the integrated Windows Firewall and provides Windows users individually managed X sessions and configurations.

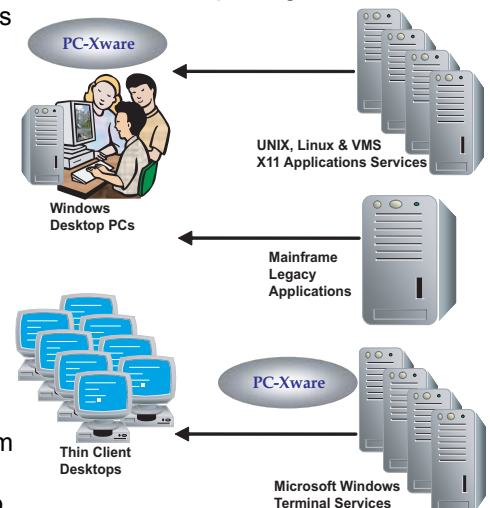
Optimized for Thin Client Server-Based Computing

PC-Xware is the ideal solution for organizations beginning to deploy Windows Terminal Services. PC-Xware installs quickly and easily on Microsoft Windows 2003 Terminal Service or Citrix Systems MetaFrame Presentation Server. Access from thin client desktops is provided through the RDP or ICA protocols. System Administrators can choose the level of access and configuration control users are allowed, regardless of whether the desktop device is a PC, Windows-based Terminal, Network Computer, or Apple.

High Performance X Server

NCD PC-Xware from ThinPATH Systems Inc. combines high X Windows compliance with optimized performance for multi-user Windows systems from Microsoft. To ensure easy access between legacy and Windows applications. PC-Xware uses the advanced desktop design of Windows to access X Windows and other Intranet applications over the network.

A Connection Wizard simplifies access to host applications, while central administration options allow a high degree of setup flexibility. With PC-Xware, System Administrators are readily able to optimize the X Windows Server to match users' expertise at the desktop. PC-Xware software is the fastest version ever and includes optimized support for both 32 bit and 64 bit Windows Systems.



PC-Xware Annual Subscription Plus

ThinPATH's optional PC-Xware Annual Subscription Plus is a cost effective way to ensure you receive the benefits of ongoing improvements made to the ThinPATH PC-Xware software you own. ThinPATH PC-Xware Subscription Plus provides one year of software updates and E-mail support. Purchase this service for added peace of mind and to avoid having to purchase new software with each release.

PC-Xware Training & Support

ThinPATH Systems Inc. offers per incident and extended service agreements for product support and also provides training resources for successful PC-Xware product rollouts. Contact your ThinPATH Systems representative for information on specific options available to you.

PC-Xware Product Evaluation

To evaluate PC-Xware free for 30 days please go to our web site and download it today! www.tp-sys.com



PC-Xware

Version 6.0

ThinPATH PC-Xware Detailed Specifications

X Server

- 32-bit X11R6 Support
- Backing store, Save under, XRDB
- Automatic visual selection - Support for StaticGray, GrayScale, PseudoColor, DirectColor, TrueColor & StaticColor
- Extension support - SIE, SHAPE, XIE, XIdle, XTEST, PSEUDO-ROOT, MIT SUNDRY-NONSTANDARD & ServerManagementExtension

X Font Management & Support

- Automatic font substitution
- X11R6 font server support with reconnection
- File services access to fonts via TFTP
- Native X server font format compressed .PCF
- Additional Fonts
HP, DEC, SUN, Hanzi Guobiao, Hangul & Kanji

Keyboard

- Automatic keyboard detection
- Graphical keyboard remapper
- Predefined Maps for Generic UNIX, Sun Type 4 and 5, DEC, Latin 1, Latin 2, and Modifier keys

Desktop Management & Support

- Single window mode - One Microsoft window in which all X applications run
- Multiple window mode - X applications and Windows applications run simultaneously on desktop
- Virtual screen support

Startup Methods

- Telnet, rlogin, rexec, rsh & ssh¹
- X Display Manager (XDMCP) Broadcast, direct, indirect
- PC-Xware Connection Manager Wizard

Terminal Emulation

- VT320, VT300, VT220, VT100, VT52 ANSI support - Uses X default file for terminal emulation configuration
- Character sets - ASCII (7-bit and 8 bit), DEC Supplemental Graphics, ISO Latin Alphabets 1 supplemental

Administration Management

- Open systems-based remote configuration and diagnostics GUI-based

X Windows Environment Support

- CDE, KDE, Gnome, Linux, Sun, HP, SGI & Dec Windows
- Locale and Remote window managers Support
- Supportes single and multiple window mode
- Uses standard X Window configuration files

Secure Remote Access

- Support for Encrypted and Compressed Intranet or Internet based X Sessions through SSL¹

Operating System Requirements

- Microsoft Windows® XP (Service Pack 2)²
- Microsoft Windows® 2003 Server (Service Pack 1)²
- Microsoft Windows® 2000 Pro (Service Pack 4)
- Microsoft Windows® 2000 Server (Service Pack 4)

System Requirements

- Pentium (1 Ghz) or greater
- Minimum memory prescribed by operating system
- 40 MB available hard disk space

Multiple User Support

- Separate folders for Administrator and user-created connections
- Connections displayed in user's Start menu
- Configurations defined by the Administrator or end-users
- Multiple instances of the X server running with unique display numbers
- Display number may be specified or automatically assigned

Product Licensing

A product license is required for each PC desktop or for concurrent Terminal Server sessions where NCD PC-Ware software is installed.

ThinPATH Systems Inc. PC-Xware Product Codes

Code	Description
PC6710	PC-Xware Single User License
PC6710--5	PC-Xware 5 Pack
PC6710-10	PC-Xware 10 Pack
PC6716	PC-Xware Upgrade Single User License
PC6716	PC-Xware Upgrade 5 Pack License
PC6716	PC-Xware Upgrade 10 Pack License
PC6710-S	PC-Xware Site License
PC6710-ASP	PC-Xware Annual Subscription Plus

ThinPATH Systems Inc.
26200 SW 95th Ave. Suite 301
Wilsonville, Oregon 97070
USA
971-404-3285

GM3 GmbH
Raiffeisenstr. 65
74906 Bad Rappenau
Germany
+49 7264 2069-0



Product specifications subject to change without notice.

1 - Requires SSH Client Software.

2 - Support for previous Service Packs are also included.

T900004 Rev A

