



NCD ThinPATH teemtalk Startup Guide

Copyright

Copyright © 2001 by Network Computing Devices, Inc. (NCD). The information contained in this document is subject to change without notice. Network Computing Devices, Inc. shall not be liable for errors contained herein or for incidental or consequential damages in connection with the furnishing, performance, or use of this material. This document contains information which is protected by copyright. All rights are reserved. No part of this document may be photocopied, reproduced, or translated to another language without the prior written consent of Network Computing Devices, Inc.

Trademarks

Network Computing Devices, ThinSTAR, and XRemote are registered trademarks of Network Computing Devices, Inc. ThinPATH, Explora, Explora Pro, ECX, HMX, HMXpro, HMXpro24, WinCenter, WinCenter Pro, WinCenter Connect, NCDnet, and NCDware are trademarks of Network Computing Devices, Inc.

Other product and company names mentioned herein are the trademarks of their respective owners. All terms mentioned in this book that are known to be trademarks or service marks have been appropriately capitalized. NCD cannot attest to the accuracy of this information. Use of a term in this book should not be regarded as affecting the validity of any trademark or service mark.

Disclaimer

THE SOFTWARE PRODUCTS ARE PROVIDED "AS IS" WITHOUT WARRANTY OF ANY KIND. TO THE MAXIMUM EXTENT PERMITTED BY APPLICABLE LAW, NCD FURTHER DISCLAIMS ALL WARRANTIES, INCLUDING WITHOUT LIMITATION, ANY IMPLIED WARRANTIES OF MERCHANTABILITY, FITNESS FOR A PARTICULAR PURPOSE AND NONINFRINGEMENT. THE ENTIRE RISK ARISING OUT OF THE USE OR PERFORMANCE OF THE SOFTWARE PRODUCTS AND DOCUMENTATION REMAINS WITH THE END USER.

TO THE MAXIMUM EXTENT PERMITTED BY APPLICABLE LAW, IN NO EVENT SHALL NCD OR ITS SUPPLIERS BE LIABLE FOR ANY CONSEQUENTIAL, INCIDENTAL, DIRECT, INDIRECT, SPECIAL, PUNITIVE, OR OTHER DAMAGES WHATSOEVER (INCLUDING, WITHOUT LIMITATION, DAMAGES FOR LOSS OF BUSINESS PROFITS, BUSINESS INTERRUPTION, LOSS OF BUSINESS INFORMATION, OR OTHER PECUNIARY LOSS) ARISING OUT OF THE USE OF OR INABILITY TO USE THE SOFTWARE PRODUCTS OR DOCUMENTATION, EVEN IF NCD HAS BEEN ADVISED OF THE POSSIBILITY OF SUCH DAMAGES. BECAUSE SOME STATES/JURISDICTIONS DO NOT ALLOW THE EXCLUSION OR LIMITATION OF LIABILITY FOR CONSEQUENTIAL OR INCIDENTAL DAMAGES, THE ABOVE LIMITATION MAY NOT APPLY TO YOU.

Revision History

March 2001. NCD ThinPATH teemtalk Startup Guide.
July 2001. NCD ThinPATH teemtalk Startup Guide, Rev B.

Contents

Welcome to NCD ThinPATH teemtalk	1
Software Installation and Configuration	1
Installation Requirements	2
Downloading NCD ThinPATH teemtalk	3
Installing NCD ThinPATH teemtalk	3
Configuring a Terminal Emulation Connection Using ThinPATH Manager	5
Using NCD ThinPATH teemtalk	9
Documentation	9
Index	11

Welcome to NCD ThinPATH teemtalk

The NCD ThinPATH teemtalk software provides the following functionality for the NCD ThinSTAR family of terminals:

- Terminal emulation for a wide range of host systems including:
 - ADDS A2
 - ANSI-BBS
 - DEC VT 52/100/220/320/420
 - HP 2622A, 2392A, 700/92
 - Hazeltine 1500
 - IBM TN3270E, TN5250E and 3151
 - SCO
 - Tandem 6526, 6530
 - TVI 925
 - Wyse 50, 50+ and 60
- Centralized configurability supported by the NCD ThinPATH Manager.
- Enhanced printing to locally attached printers or network printers.

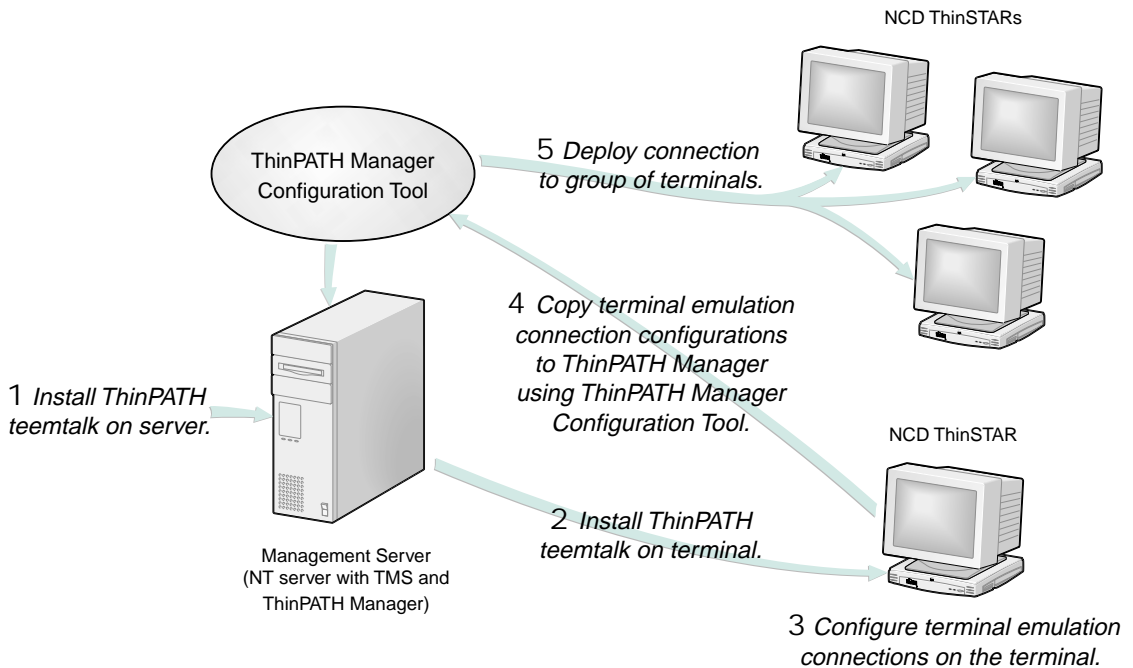
Software Installation and Configuration

This Guide is intended for the system administrator. It explains how to:

- install the NCD ThinPATH teemtalk software on a Microsoft Windows 2000 or a Microsoft Windows NT server and then from the server on to a terminal.
- configure the emulations on the terminal.
- copy terminal emulation connection configurations to ThinPATH Manager.
- deploy terminal emulation configurations to a group of terminals using ThinPATH Manager.

Note Some of the functionality described in this manual requires NCD ThinPATH Manager. To purchase ThinPATH Manager software, see your NCD reseller.

The following diagram provides an overview of the installation/configuration process.



Installation Requirements

The installation requirements are:

- NCD ThinSTAR Operating Software, version 2.2 or greater
- Microsoft Windows 2000 or Microsoft Windows NT 4.0
- One of the following terminals:
 - ThinSTAR 200 Series

- ThinSTAR 300 Series
- ThinSTAR 400 Series
- Administrative rights to install and configure the software.

Downloading NCD ThinPATH teemtalk

To download the teemtalk software onto the server:

1. Log on as administrator to a server with the ThinSTAR operating software.
2. Go to the NCD Web site (<http://www.ncd.com/thinpath/access>) and fill out the registration form.
3. Click **I Accept** to accept the terms of the displayed license agreement.

Note We suggest that you print a copy of the license agreement and keep it with a backup copy of the downloaded software.

4. Download the Terminal Emulation software's self-extracting executable file (**ThinPATH_teemtalk.exe**) containing:
 - Terminal Emulation software setup
 - ThinPATH teemtalk Startup Guide
 - Terminal Emulation User's Guide
 - Updated ThinPATH Manager Configuration Tool

Installing NCD ThinPATH teemtalk

To install the software on the server:

1. Close NCD ThinPATH Manager's Configuration Tool and ThinSTAR Management Services if open.
2. Run ThinPATH_teemtalk.exe.
3. Modify the "Unzip to folder" to "C:\Program Files\NCD" if necessary.
4. Click **Unzip**. The NCD ThinPATH teemtalk Setup Wizard displays.

Note The NCD ThinPATH teemtalk installation detects ThinSTAR Management Service (TMS). If TMS is missing, an error message displays.

5. Enter the 22-character license key, including the dashes, that you received either in e-mail as a result of your web registration or in the packaging.
6. Complete the teemtalk Setup Wizard.
7. Restart your ThinSTAR terminals to install ThinPATH teemtalk on the terminals.

Note To uninstall ThinPATH teemtalk, use the Control Panel's Add/Remove programs function from the server.

For additional information on ThinPATH Manager, see the *NCD ThinPATH Manager Centralized Startup Guide*.

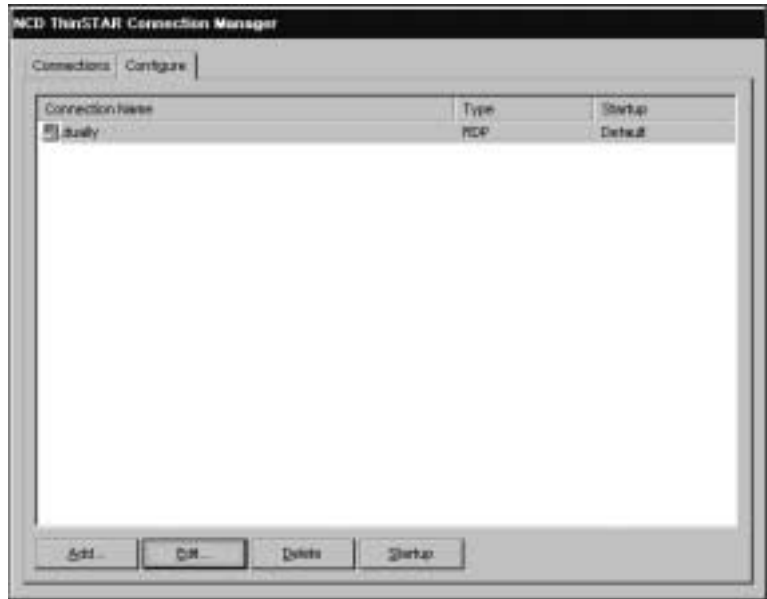
Configuring a Terminal Emulation Connection Using ThinPATH Manager

This section describes the basic procedures for configuring, editing and deleting a connection using ThinPATH teemtalk.

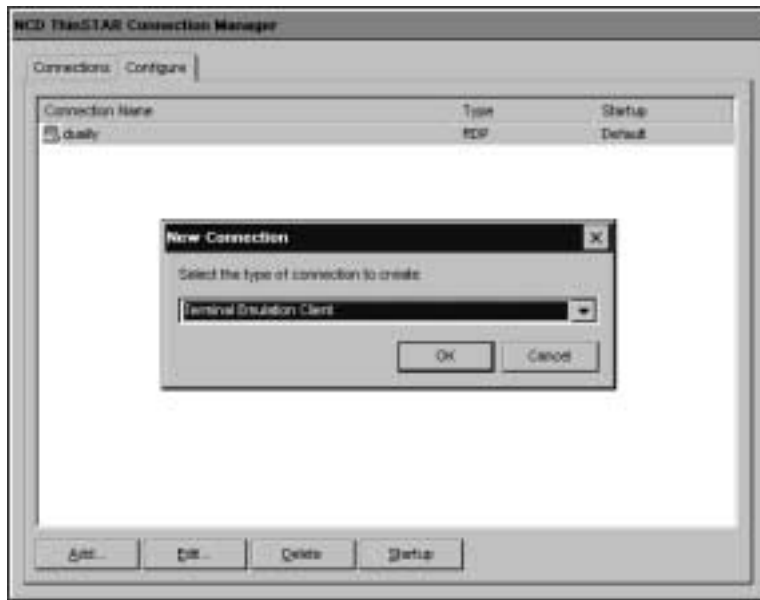
At the Terminal

Note For detailed information on the TE Client Connection Wizard, see Chapter 2 of the *Terminal Emulation User's Guide*.

1. Bring up NCD ThinSTAR Connection Manager and select the Configure tab.



2. On the Configure tab click **Add**. The New Connection dialog displays.



3. Select Terminal Emulation Client and click **OK**. The TE Client Connection wizard displays.



4. Provide the information requested by the TE Client Connection Wizard and click **Finish** to return to the ThinSTAR Connection Manager.

Note For information on using the TE Client Connection Wizard to configure options such as the print port settings or to define the functions of keys on the keyboard, see the *Terminal Emulation User's Guide*.

5. The session name that you specified displays in the Connection Name list on the Connection tab. Select a name and click **Connect**.

Deleting or Editing a Terminal Emulation Connection

1. From the Configure tab select a Connection Name and click **Delete**.

or

2. Select a Connection Name and click **Edit** to display the TE Client Connection Properties dialog. Proceed through the wizard to edit the connection.

Using ThinPATH Manager

NCD ThinPATH Manager is an optionally purchased software tool that allows you to centrally configure a group of terminals. This central configuration avoids a tedious setup at each desktop, saving you time and avoiding configuration errors.

Note You cannot edit a terminal emulation connection using ThinPATH Manager at the server. You must delete the connection and recreate it at the terminal.

1. Configure a terminal emulation connection. See *At the Terminal* on page 5.
2. To start the Configuration Tool, select **Start > Programs > Administrative Tools (Common) > NCD ThinPATH Manager > NCD ThinPATH Configuration Tool**.
3. Click **New Configuration Settings** and click **OK**.
4. Select the Connection tab.
5. Check Include Connection page settings in configuration.
6. On the Configure tab, check Connections and click **Add**. The New Connection dialog displays.
7. Select the Terminal Emulation Client. The Select Source Terminal dialog displays.
8. Select or specify the IP address of the Terminal Emulation Client configuration you want to copy and click **Next**.

Note All Terminal Emulation Client connections are copied into the ThinPATH Manager Configuration Tool.

9. Restart the terminals. Your configuration changes will only take effect when the terminals have been restarted.

Note To delete a connection, select the connection and click **Delete**.

For additional information on ThinPATH Manager, see the *NCD ThinPATH Manager Centralized Startup Guide*.

Using NCD ThinPATH teemtalk

For information on how to:

- configure specific terminal emulations
- create modem and serial connections
- assign printer port settings
- map key boards

see the *Terminal Emulation User's Guide*.

Documentation

Documentation is available online in PDF format.

For most online documents, select: Start\Programs\Administrative Tools (Common) and then:

- NCD ThinPATH Manager\Online Documentation for:

Centralized Startup Guide	Terminal setup from a central location, configuring terminal properties and connections for groups of terminals.
Manager Reference	Information about NCD ThinPATH Manager tools with a section on troubleshooting and a glossary.
ThinPATH Manager System Administration Guide	Information about defining terminal properties; using a web browser to set properties and restarting terminals from a central location.
Release Notes	Release-specific details and last-minute information.

or

- NCD ThinSTAR OS\Online Documentation for:

Connection Reference	Information about creating and managing connections.
----------------------	--

Installation Guide	Software installation for NCD ThinSTAR Operating Software and NCD ThinPATH Manager.
Terminal Administration Reference	Automatic updating and recovery of NCD ThinSTAR Operating Software, troubleshooting and a glossary.
Terminal Properties Reference	Descriptions of terminal properties.
Terminal Startup Guide	Individual terminal setup, terminal properties and connections.
User's Guide	Description of the setup wizard with brief introduction to terminal properties and connections.
Release Notes	Release-specific details and last-minute information.

To access the NCD ThinPATH teemtalk documentation, you must look in the **NCD \ThinSTAR Management \Doc** folder for:

Terminal Emulation User's Guide	Description of specific terminal emulations, modem and serial connections and print port settings.
NCD ThinPATH teemtalk Startup Guide	Installation requirements, how to download and install the software; how to configure a terminal emulation connection.
teemtalk Release Notes	Release-specific details and last-minute information.

Index

C

- configuring
 - terminal emulation connection 5

D

- documentation
 - ThinPATH Manager 9
 - ThinPATH teemtalk 10
 - ThinSTAR operating system 9
- downloading
 - self-extracting executable file 3
 - ThinPATH teemtalk 3

I

- installation
 - requirements 2
- installing
 - ThinPATH teemtalk 3

T

- terminal emulation
 - connection
 - deleting 7
 - editing 7
- ThinPATH Manager 2, 8
 - configuring a terminal emulation connection 5

ThinPATH teemtalk

- downloading 3
- installing 3
- uninstalling 4
- using 9

U

- uninstall
 - ThinPATH teemtalk 4

W

- website
 - NCD 3

