



NCD ThinSTAR  
User's Guide

## **Copyright**

Copyright © 2000 by Network Computing Devices, Inc. (NCD). The information contained in this document is subject to change without notice. Network Computing Devices, Inc. shall not be liable for errors contained herein or for incidental or consequential damages in connection with the furnishing, performance, or use of this material. This document contains information which is protected by copyright. All rights are reserved. No part of this document may be photocopied, reproduced, or translated to another language without the prior written consent of Network Computing Devices, Inc.

## **Trademarks**

Network Computing Devices, ThinSTAR, and XRemote are registered trademarks of Network Computing Devices, Inc. ThinPATH, Explora, Explora Pro, ECX, HMX, HMXpro, HMXpro24, WinCenter, WinCenter Pro, WinCenter Connect, NCDnet, and NCDware are trademarks of Network Computing Devices, Inc.

Other product and company names mentioned herein are the trademarks of their respective owners. All terms mentioned in this book that are known to be trademarks or service marks have been appropriately capitalized. NCD cannot attest to the accuracy of this information. Use of a term in this book should not be regarded as affecting the validity of any trademark or service mark.

## **Disclaimer**

THE SOFTWARE PRODUCTS ARE PROVIDED "AS IS" WITHOUT WARRANTY OF ANY KIND. TO THE MAXIMUM EXTENT PERMITTED BY APPLICABLE LAW, NCD FURTHER DISCLAIMS ALL WARRANTIES, INCLUDING WITHOUT LIMITATION, ANY IMPLIED WARRANTIES OF MERCHANTABILITY, FITNESS FOR A PARTICULAR PURPOSE AND NONINFRINGEMENT. THE ENTIRE RISK ARISING OUT OF THE USE OR PERFORMANCE OF THE SOFTWARE PRODUCTS AND DOCUMENTATION REMAINS WITH THE END USER.

TO THE MAXIMUM EXTENT PERMITTED BY APPLICABLE LAW, IN NO EVENT SHALL NCD OR ITS SUPPLIERS BE LIABLE FOR ANY CONSEQUENTIAL, INCIDENTAL, DIRECT, INDIRECT, SPECIAL, PUNITIVE, OR OTHER DAMAGES WHATSOEVER (INCLUDING, WITHOUT LIMITATION, DAMAGES FOR LOSS OF BUSINESS PROFITS, BUSINESS INTERRUPTION, LOSS OF BUSINESS INFORMATION, OR OTHER PECUNIARY LOSS) ARISING OUT OF THE USE OF OR INABILITY TO USE THE SOFTWARE PRODUCTS OR DOCUMENTATION, EVEN IF NCD HAS BEEN ADVISED OF THE POSSIBILITY OF SUCH DAMAGES. BECAUSE SOME STATES/JURISDICTIONS DO NOT ALLOW THE EXCLUSION OR LIMITATION OF LIABILITY FOR CONSEQUENTIAL OR INCIDENTAL DAMAGES, THE ABOVE LIMITATION MAY NOT APPLY TO YOU.

## **Revision History**

May 2000. NCD ThinSTAR User's Guide. Document 9300925, Rev. A.

## **Software Version**

NCD ThinSTAR Operating Software, v. 2.20.

# Contents

NCD ThinSTAR Basics	1
What is a Windows-based Terminal?	1
What is a Client?	2
Initial Screens	2
If a Desktop or Logon Dialog Box Appears	3
If the Connection Manager Appears	5
If the Setup Wizard Appears	6
Using Connection Wizards	7
The WTS Connection Wizard	7
The Citrix ICA Connection Wizard	9
The Dial-Up Connection Wizard	10
Using the Connection Manager	12
Adding or Editing Connections	13
Starting Multiple Connections	15
Logging Off	16
Disconnecting vs. Logging Off	17
Ending Autostart Connections	17

In Case of Trouble	18
The Network Dialog Appears	18
Fixing a Cable Problem	19
Fixing a Network Mode Problem	19
Fixing an Address Problem	19
An Upgrade Message Appears	20
The Screen Looks Garbled	21
Error Messages Appear	21
LEDs Blink on Front of Base Unit	22
Advanced User's Configuration Notes	23
Configuring Connections	23
Using Terminal Properties	27
Index	35

# NCD ThinSTAR User's Guide

This guide is for people who use NCD ThinSTAR terminals.

## NCD ThinSTAR Basics

This guide describes basic operating procedures for NCD ThinSTAR Windows-based terminals (WBTs).

It explains how to turn on your terminal, how to create and start connections, and how to end your work session.

### What is a Windows-based Terminal?

Your NCD ThinSTAR terminal is a thin client device that allows you to use Microsoft Windows applications on servers running Microsoft Windows NT 4.0, Terminal Server Edition, Microsoft Windows 2000 Terminal Server, or Citrix WinFrame.

The Microsoft Windows servers may also be running Citrix MetaFrame. These Citrix products allow connections via the ICA (Independent Computing Architecture) protocol.

In addition, your system administrator may have added optional software to your terminal that allows you to connect to additional types of hosts, such as Unix servers.

In this manual, *Terminal Server* refers to the Microsoft server software, and *Terminal Server host* refers to the server computer.

Once you connect to a server and log on, the server's desktop or the application you request appears on your terminal screen and you can begin your work session.

### What is a Client?

A client is an application or device that can communicate over a network with a server (a computer that provides services, such as applications). The NCD ThinSTAR thin client is a simple device, with built-in software, that can communicate with powerful servers.

The programs that provide the ability to connect to servers are called connection clients. Three connection clients are included in the software built into the NCD ThinSTAR Terminals: the Microsoft Terminal Server Client, the Citrix ICA Client, and the NCD Dial-Up Client.

### Initial Screens

Your initial screen may be the application that you requested. Other possibilities are:

- **Windows NT desktop or logon information dialog**  
If a connecting message briefly appears, and the Windows NT desktop or logon dialog appears, you are connected to a Windows NT host through either a Microsoft RDP (Remote Desktop Protocol) connection or Citrix ICA connection. For details, see “If a Desktop or Logon Dialog Box Appears” on page 3.
- **NCD ThinSTAR Connection Manager**  
If the ThinSTAR Connection Manager appears, to connect to a server, select a *Connection Name* and click **Connect**. For details, see “If the Connection Manager Appears” on page 5.
- **NCD ThinSTAR Setup Wizard**  
If the NCD ThinSTAR Setup Wizard appears, your terminal has not been configured. You need to take further steps in order to use it. For details, see “If the Setup Wizard Appears” on page 6.

## If a Desktop or Logon Dialog Box Appears

If automatic logon has not been configured, you need to log on before the desktop appears. This section describes the logon process and the two desktops that are likely to appear.

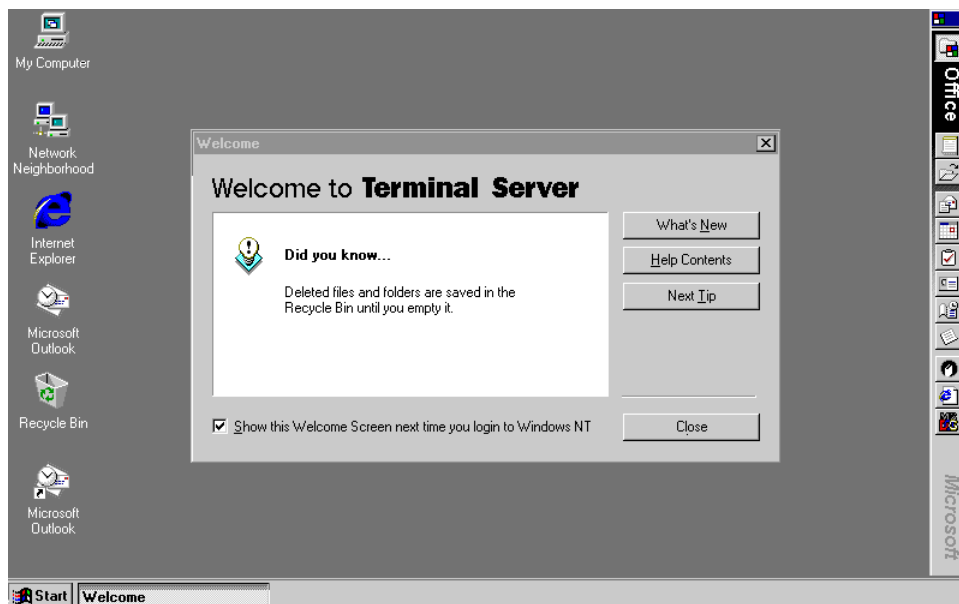
### Logon Dialog Box

If a Logon Information dialog box appears:

1. Enter your user name and password.
2. If the domain in the **Domain** or **From** field is not correct, select another from the drop-down list. If you are not sure which domain to use, ask your system administrator.
3. Click **OK**.

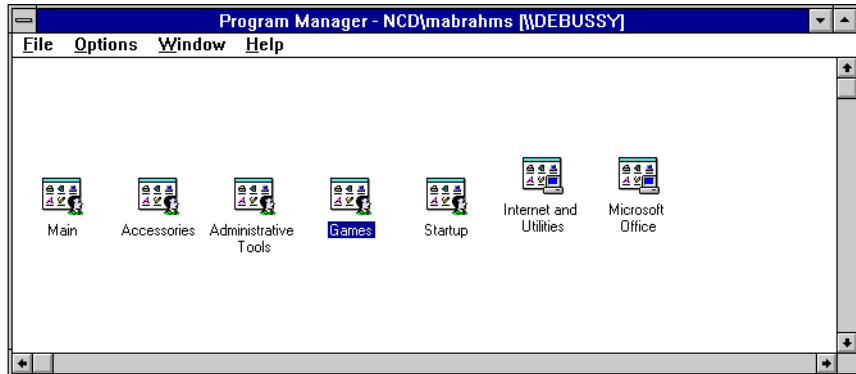
### Windows NT 4.0, Windows 2000, or MetaFrame Desktop

If a Windows or MetaFrame desktop appears, go to **Start > Programs** and select the program you wish to run.



## WinFrame Desktop

If a WinFrame desktop appears, open the Program Manager (if it's not already open) and click on the program you wish to run.



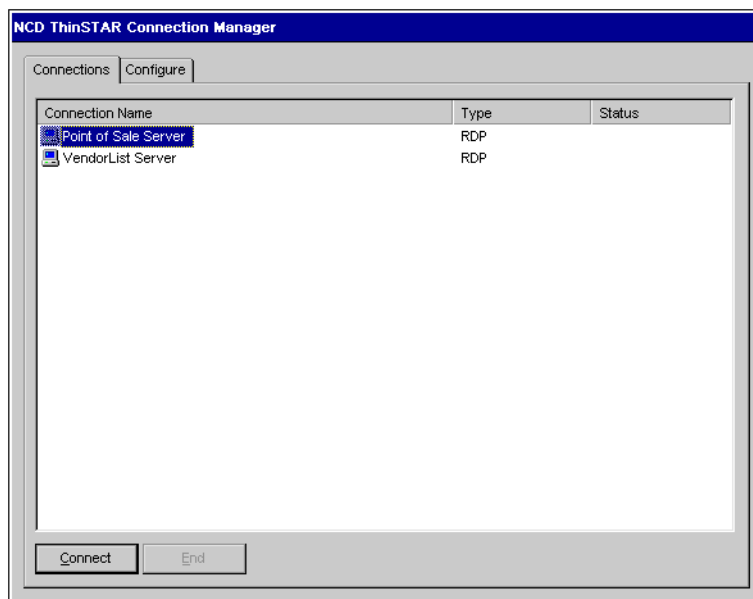


## If the Connection Manager Appears

Depending on how your terminal is configured, the Connection Manager lists one or more connections. To select a connection, select a Connection name in the connection list and click **Connect**.

- If the connection was defined for automatic log on and the server it connects to is running, the terminal makes the connection and you are logged on.
- If the connection was defined for automatic logon and automatic application startup, and the server it connects to is running, the terminal makes the connection, you are logged on, and your application starts.
- Otherwise the connection contacts the server and its logon dialog appears. For more information, see “If a Desktop or Logon Dialog Box Appears” on page 3.

The Connection Manager is discussed in detail in “Using the Connection Manager” on page 12.



## If the Setup Wizard Appears

The first time a terminal starts, the NCD ThinSTAR Setup Wizard appears. The Setup Wizard may also appear under other circumstances controlled by your system administrator.



Ask your system administrator whether you need to change any of the data in the Setup Wizard screens. The following instructions assume you are using the terminal's default values.

To page through the Setup Wizard:

1. Click **Next**.
2. Click **Accept** on the license acceptance page.
3. Click **Next** until you are asked whether to change the printer configuration, then click **No**.
4. Click **Finish**.

After you finish with the NCD ThinSTAR Setup Wizard, a Connection Wizard may appear; see page 7 for information on using connection wizards.

## Using Connection Wizards

If your terminal has not been configured with any connections, a connection wizard appears after you complete the Setup Wizard. A connection wizard also appears when you add or edit a connection in the Connection Manager.

This section describes how to configure connections with the following wizards:

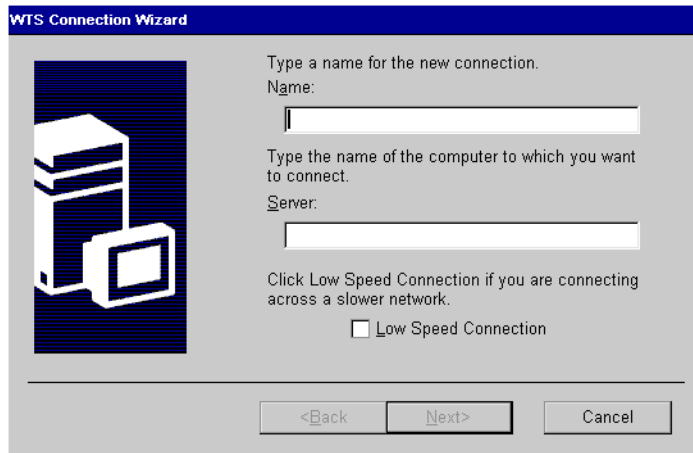
- Microsoft's WTS Connection Wizard
- Citrix ICA Client's Connection Wizard
- NCD Dial-Up Connection Wizard

**Note** Your terminal may display other client connection wizards if optional software has been installed.

Once you create a connection with a connection wizard, the NCD ThinSTAR Connection Manager appears. Its uses are discussed in detail in on page 12.

### The WTS Connection Wizard

If the WTS Connection Wizard appears, create a Microsoft RDP connection using the name or network address of a server running Windows NT, Terminal Server Edition, referred to as the Terminal Server host in this Guide.



To create the connection:

1. In the first dialog box of the WTS Connection Wizard:
  - Enter a brief description of the connection in the **Name** field.
  - Enter the name or network IP (Internet Protocol) address of a Terminal Server in the **Server** field and click **Next**.

**Note** If you plan to use the NCD dial-up client to access this connection, you may need to enter an FQDN (fully qualified domain name, for example, accthydra.ncd.com) or IP address in the **Server** field.

2. The next two dialog boxes specify an automatic log on and automatic application startup. Do not change the fields in these dialogs unless instructed to do so by your system administrator. Click **Next** each time.
3. Click **Finish**. The NCD ThinSTAR Connection Manager appears.
4. To select the connection you just created, select its Connection name, and click **Connect**.

## The Citrix ICA Connection Wizard

If the Citrix ICA Connection Wizard appears, create a Network or Dial-In ICA connection to a Citrix WinFrame or MetaFrame (Terminal Server) host using the name or network address of the host computer (server).

As with other connections, you can configure the automatic startup of an application or a published application (ICA connections only). A published application is one that your system administrator has named and made available to everyone on the network.

To create the connection:

1. Select the connection type, either a Network Connection or a Dial-In Connection. If you select a Dial-In Connection, the next dialog box asks for the phone number of the modem to which you wish to connect. You can configure your modem at this point, if needed. The remaining dialog boxes are the same as for a Network Connection. Click **Next**.

**Note** Do not select a dial-in connection unless you have been instructed to do so by your system administrator.

2. In the next dialog box select a Citrix server or Published Application for your connection. If you select Published Application, you must use one that is listed. If no published applications are listed, select a Citrix ICA server, or enter a Citrix server name. Click **Next**.

**Note** If you plan to use the NCD Dial-Up client to access this connection, the server may need to be defined with its FQDN (fully qualified domain name, for example, accthydra.ncd.com) or IP address.

3. If desired, select an application for automatic startup. Click **Next**.
4. If desired, specify logon information. Click **Next**.
5. Select Window Options, if needed. Click **Next**.

6. Set Compression and Sound, if needed (at this time Cache cannot be configured). Click **Next**.
7. Enter a descriptive title for the connection. Click **Finish**. The Connection Manager appears.
8. Select the connection you just created and click **Connect**.

### ICA Dial-In vs. NCD Dial-Up

With the Citrix ICA Dial-In client, you can only connect to MetaFrame or WinFrame servers.

With the NCD Dial-Up Client, you can create a dial-up connection to any available server, for example, Microsoft Terminal Server hosts or Citrix ICA servers.

### The Dial-Up Connection Wizard

The NCD Make New Dial-Up Connection Wizard only appears if you are adding a dial-up connection or if your terminal has been configured in dial-up mode and no dial-up connection exists.

If the Make New Dial-Up Connection Wizard appears, create a dial-up connection, using the phone number of the modem to which you wish to connect.



To create the connection:

1. Give the dial-up connection a descriptive name and click **Next**.
2. Click **Next** to accept the default modem, or select a modem and configure it, if necessary. See your system administrator for help.
3. Enter the phone number of the modem to which you are connecting. Click **Next**.
4. Associate a protocol client (RDP or ICA) with your dial-up connection by selecting a session to start. This selection is optional. Click **Finish** and the Connection Manager appears.
5. Select the dial-up connection and click **Connect**. Several messages appear indicating the progress of the connection.
6. Your session automatically starts if you chose to start a session after the dial-up connection has been established (see Step 4). Otherwise, proceed to Step 7.
7. If you did not select a session to start in Step 4, press **Ctrl+Alt+End** to bring up the NCD ThinSTAR Connection Manager, select a connection to a server and click **Connect**.

### Switching Terminal Modes

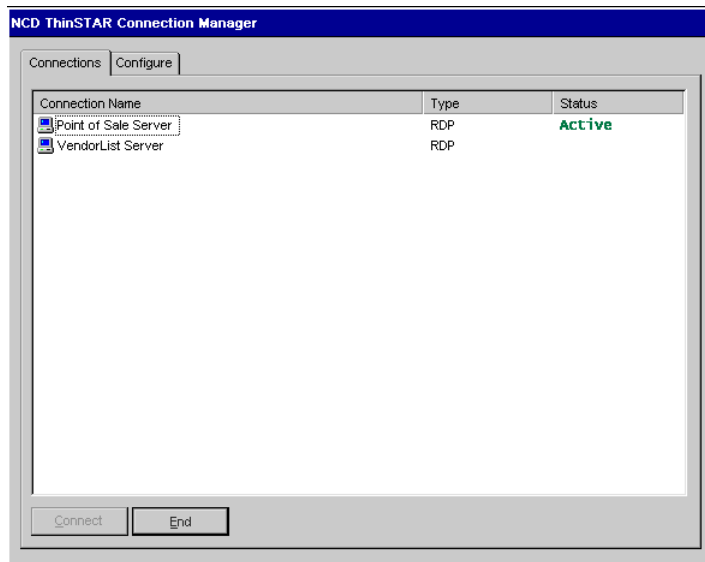
Dial-up connections cannot be activated unless the terminal is in dial-up mode. Conversely, if the terminal is in dial-up mode, regular protocol connections can only be activated after the dial-up connection is active. To switch the terminal mode, see “Network connection type—LAN or dial-up” on page 30.

## Using the Connection Manager

The NCD ThinSTAR Connection Manager lists all defined network and dial-up connections. Active connections are designated in the Status column.

This section explains how to use the Connection Manager to start, stop, add, edit, and manage connections.

When the terminal is not connected to a server, the Connection Manager is always displayed. When the terminal is connected to a server, you can display the Connection Manager by pressing **Ctrl+Alt+End**.





The Connection Manager lets you:

- Start connections or switch among currently active connections.
  - Select the connection name and click **Connect**. See “Starting Multiple Connections” on page 15 for details.
- Stop connections.
  - If problems on the server cause your connection to be unresponsive to a normal log off, select the connection name and click **End**. See “Logging Off” on page 16 for details.
- Add or edit new connections.
  - See the following section, “Adding or Editing Connections”, for details.

## Adding or Editing Connections

To add or edit a connection when connected to a server, press **Ctrl+Alt+End** to bring up the NCD ThinSTAR Connection Manager, and click the **Configure** tab.

- To add a connection, click **Add**. The New Connection dialog box appears. Select a client from the drop-down list and click **OK**.
- To edit a connection, select a connection name and click **Edit**.

In either case, the appropriate connection wizard for the client you selected appears.

**Note** If the **Configure** tab does not appear, your system administrator has disabled it.

### Default Connections

Specifying a connection as the default connection:

- Highlights that connection when the terminal starts up and the NCD ThinSTAR Connection Manager appears.
- Starts the connection if **Ctrl+Alt+Home** is pressed.

To select a connection as the default, on the **Configure** tab of the NCD Connection Manager, select a connection and click **Startup**. Click **Make the selected connection your default connection** and click **OK**.

### Autostart Connections

Specifying an autostart connection:

- Starts that connection when the terminal starts up.
- Restarts the connection when it ends.

On the **Configure** tab of the NCD Connection Manager, select the connection you want to start automatically. To display the Connection Startup dialog box, click **Startup**. Click **Automatically start the selected connection at startup** and click **OK**. For more information, see “Ending Autostart Connections” on page 17.

**Note** An autostart connection also functions as the default connection. Designating a different connection as the default makes any autostart connection revert to non-autostart status. When you log off an autostart connection, the connection restarts automatically. For details, see “Ending Autostart Connections” on page 17.

## Starting Multiple Connections

The NCD ThinSTAR terminal allows multiple simultaneous LAN connections to one or more servers. The number of connections you can start depends on the amount of memory in your terminal.

To start your second connection:

1. Press **Ctrl+Alt+End** to bring up the NCD ThinSTAR Connection Manager.
2. Select the connection name, then click **Connect**.

To switch between running connections:

Press **Ctrl+Alt+End** to bring up the NCD ThinSTAR Connection Manager.

- Select a connection name whose **Status** field is active, then click **Connect**.

OR

- Press **Ctrl+Alt+Up arrow** or **Ctrl+Alt+Down arrow** to cycle through the list of active connections. The connection list reflects the order in which the connections were started, the most recent being on top.

Note Hot keys for managing multiple connections are explained in more detail in “Connection hot keys” on page 28 and also, “Managing multiple connections” on page 24.

# Logging Off

To log off and end your session:

1. If you connected to an application instead of a server's desktop, closing the application terminates the connection.
2. If you connected to a Windows server or MetaFrame desktop:
  - Close all applications.
  - Click **Start** on the taskbar at the bottom of the Windows server desktop.
  - Select **Logoff**, then click **OK**. The Windows server closes any programs that are still running.
3. If you connected to a WinFrame desktop:
  - Close all applications.
  - Click **File** in the menu bar at the top of the desktop.
  - Select **Logoff**, then click **OK**.
4. If problems on the server cause your connection to not respond to a normal log off, bring up the NCD ThinSTAR Connection Manager, select the connection name and click **End**. Your session is disconnected, but you are not logged off.

Once a session ends, a new session starts or the NCD ThinSTAR Connection Manager appears. Repeat the steps to end all active connections and then you can turn off the terminal.

## Disconnecting vs. Logging Off

To disconnect from a server session:

- Select **Start > Disconnect** on a Windows server or Citrix MetaFrame
- Select **File > Disconnect** on Citrix WinFrame.

This suspends all open applications.

When you reconnect to the session later by logging on again, your applications resume. Because disconnected sessions still consume server resources, most system administrators prefer that you log off.

When you log off, your programs are terminated and the session is ended. You must restart the programs at the next log on.

## Ending Autostart Connections

To end an autostart connection, follow these steps:

1. Press **Ctrl+Alt+End** to bring up the NCD ThinSTAR Connection Manager and select the **Configure** tab.
2. Select the autostart connection name, click **Startup** and the Connection Startup dialog box appears.
3. Select **Make the selected connection your Default connection** and click **OK**.
4. Log off from the session as described above or select the **Connections** tab, select the connection name, and click **End**.

## In Case of Trouble

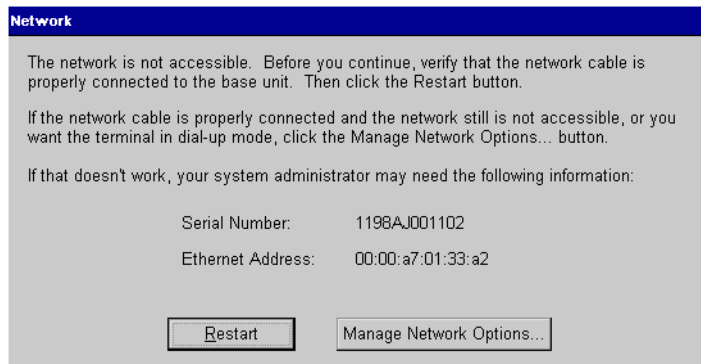
This section describes some exceptional circumstances that may occur when you power on the NCD ThinSTAR terminal. This is the place to look for information if the initial screen on your terminal does not resemble those described in Initial Screens.

If your problem is not addressed in this section, see your system administrator.

This section explains the steps to take if a network error dialog box or other error message appears and how to handle upgrade messages. Also discussed are screen display problems and blinking LEDs.

### The Network Dialog Appears

If the terminal cannot detect the network, the Network dialog box shown below appears when you restart the terminal. Conditions that cause this panel to appear, and the steps to take, are described in this section.



## Fixing a Cable Problem

If there is a problem with the terminal's network cable, the Network dialog box appears indicating that the terminal may not be connected to the network.

First, check the network cable connection at the terminal and at the outlet on the wall or hub. If the cable is not secure, make sure it is plugged in and click **Restart**. The terminal should restart normally.

## Fixing a Network Mode Problem

If the terminal is in LAN mode, and you connect it to a modem without first switching to Dial-Up mode, it may not be able to locate the network.

To switch network modes:

1. Click **Manage Network Options**. Click **Management > Network > Type**, change the network mode to **Dial-Up Connection** and click **OK**. The Terminal Settings Change panel appears.
2. Click **Yes**. The terminal restarts.

## Fixing an Address Problem

A different panel (not shown) appears if the terminal cannot find the address information required for network communication. Contact your system administrator.

If the system administrator is able to fix the problem on the Terminal Server host, click **Restart** when told to do so.

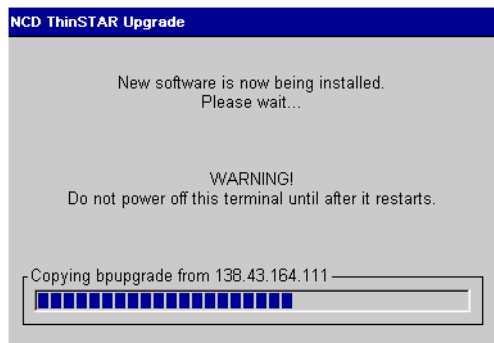
If you have to fix the problem at the terminal:

1. Obtain the necessary address information from the system administrator.
2. Click **Advanced Setup**. The Terminal Properties tabs appear. Select the **Network** tab.

3. Enter the address information obtained from your system administrator and click **OK**. The Terminal Settings Change panel appears.
4. Click **Yes**. The terminal restarts.

## An Upgrade Message Appears

Each time it is turned on, the NCD ThinSTAR terminal checks the network for a newer version of its operating software. If it detects that an upgrade is necessary, it displays the following upgrade message:



**Note** Do not turn off the NCD ThinSTAR terminal during a software upgrade. Turning off the terminal at this time may damage it.

After the upgrade is complete, the terminal automatically restarts.



## The Screen Looks Garbled

If the screen is unreadable or blank when you turn on the terminal, this means that the terminal's monitor settings (desktop area and/or refresh frequency) may be incorrect.

To restore the screen to a readable state, you must put the terminal into safe boot mode. Safe boot mode sets the desktop area (resolution) to 640x480 and the refresh frequency to 60 Hz. To do this, power on the terminal, wait for the progress bar to appear (in the middle of the logo screen), then press **F5**.

Although the forced setting makes the screen readable, the monitor may support a better resolution and frequency. When the NCD ThinSTAR Setup Wizard starts, you may select a better setting and restart the terminal.

**Note** If the wizard does not appear after you put the terminal into safe boot mode, ask your system administrator to set the resolution for you.

## Error Messages Appear

If error messages appear right after you power on the terminal, the terminal may not be able to start. For example:

**SE000014 KEYBOARD CONTROLLER ERROR**

If such messages appear and the terminal does not connect to a Terminal Server host or display a panel, contact your system administrator.

## **LEDs Blink on Front of Base Unit**

If there is a problem and the terminal is not able to display an error on the screen, the screen goes blank, the base unit beeps, and an LED on the front of the base unit blinks. If this happens, contact your system administrator.

# Advanced User's Configuration Notes

This section provides a quick reference and some additional detail on the NCD ThinSTAR Connection Manager.

This section also provides information about using Terminal Properties to configure the terminal. Full configuration details are given in the *NCD ThinSTAR Terminal Properties Reference* which you can access through the NCD website at [www.ncd.com](http://www.ncd.com).

Modifying your terminal's configuration can cause unexpected and undesirable results — ask your system administrator before attempting any of these procedures.

## Configuring Connections

This section describes displaying and using the Connection Manager. For complete information about the Connection Manager, see the *NCD ThinSTAR Connection Reference*.

Configuring Connections	
Task	Action
Displaying the NCD ThinSTAR Connection Manager	Press <b>Ctrl+Alt+End</b> . Note By default the NCD ThinSTAR Connection Manager displays two tabs: <b>Connections</b> and <b>Configure</b> . If the <b>Configure</b> tab does not appear, your system administrator has disabled it.
Viewing active connections	Display the Connections tab of the NCD ThinSTAR Connection Manager.

<b>Configuring Connections</b> <i>(continued)</i>	
<b>Task</b>	<b>Action</b>
Managing multiple connections	<p>From within an active session you can bring up the Connection Manager and create new connections. Additionally, you can switch to another active connection by using the following hot keys, which are enabled by default.</p> <ul style="list-style-type: none"> <li>■ Press <b>Ctrl+Alt+Up arrow</b> or <b>Ctrl+Alt+Down arrow</b> to cycle through the list of active connections.</li> <li>■ Press <b>Ctrl+Alt+Home</b> to display or start your default connection.</li> </ul>
Creating new RDP connections	<p>On the <b>Configure</b> tab, display the New Connection dialog box by clicking <b>Add</b>. Select Microsoft Terminal Server Client and click <b>OK</b>.</p> <p>Follow the steps given in "The WTS Connection Wizard" on page 7.</p>
Creating new ICA connections	<p>On the <b>Configure</b> tab, display the New Connection dialog box by clicking <b>Add</b>. Select Citrix ICA Client and click <b>OK</b>.</p> <p>Follow the steps given in "The Citrix ICA Connection Wizard" on page 9.</p>
Creating new Dial-Up connections	<p>On the <b>Configure</b> tab, display the New Connection dialog box by clicking <b>Add</b>. Select NCD Dial-Up Client and click <b>OK</b>.</p> <p>Follow the steps given in "The Dial-Up Connection Wizard" on page 10.</p> <p>Note Your terminal must be in Dial-Up mode for dial-up connections to work.</p>
Designating default or autostart connections	<p>Use the <b>Configure</b> tab, follow the steps given in "Default Connections" on page 14 or "Autostart Connections" on page 14.</p>

<b>Configuring Connections</b> <i>(continued)</i>	
<b>Task</b>	<b>Action</b>
Deleting connections	On the <b>Configure</b> tab, select the connection you want to delete, click <b>Delete</b> .
Modifying Citrix ICA Client connections	On the <b>Configure</b> tab, select the connection you want to modify. Display the Citrix ICA Client's utility for making modifications by clicking <b>Edit</b> . Make your changes and click <b>OK</b> .
Modifying NCD Dial-Up Client connections	On the <b>Configure</b> tab, select the connection you want to modify. Display the NCD Dial-Up Client's utility for making modifications by clicking <b>Edit</b> . Make your changes and click <b>OK</b> .
Modifying Microsoft Terminal Server client connections — changing connection Application properties	On the <b>Configure</b> tab, select the connection you want to modify. Display the Properties dialog box by clicking <b>Edit</b> . Use the <b>Applications</b> tab to change the following attributes: <ul style="list-style-type: none"> <li>■ Desktop: Select Desktop if you want the standard Windows NT desktop to appear when connecting to the Terminal Server host.</li> <li>■ File name: Select File Name if you want a particular application to appear when connecting to the Terminal Server host.</li> </ul>

<b>Configuring Connections</b> <i>(continued)</i>	
<b>Task</b>	<b>Action</b>
<p>Modifying Microsoft Terminal Server client connections — changing Network Connection properties</p>	<p>On the <b>Configure</b> tab, select the connection you want to modify. Display the Properties dialog box by clicking <b>Edit</b>. Use the <b>Net Connections</b> tab to change the following attributes:</p> <ul style="list-style-type: none"> <li>■ <b>Name:</b> a description for the connection</li> <li>■ <b>Server:</b> the IP address or the name of the Terminal Server host</li> <li>■ <b>Username:</b> depending on what you enter for the Domain: <ul style="list-style-type: none"> <li>—Username of a local account set up on a particular Terminal Server host.</li> <li>—Username of a global account set up on a Domain Controller.</li> </ul> </li> <li>■ <b>Password:</b> The password associated with the Username specified above.</li> <li>■ <b>Domain:</b> <ul style="list-style-type: none"> <li>—If the Terminal Server host belongs to a Windows NT domain, and you want users authenticated by the Primary Domain Controller, enter the Windows NT domain name.</li> <li>—If the Terminal Server is not a member of a Windows NT domain and/or you want users authenticated locally on that server, enter the name of the Terminal Server.</li> </ul> </li> <li>■ <b>Low Speed Connection:</b> If the physical connection to the Terminal Server is through a low bandwidth line (WAN or serial), rather than over an ethernet cable, check this box.</li> </ul>

## Using Terminal Properties

After initial configuration, you can modify settings using Terminal Properties.

To display Terminal Properties when the Connection Manager is on the screen, press **F2**. If you are connected to a server, first press **Ctrl+Alt+End** to display the Connection Manager, then press **F2**.

After making changes, you can click **Apply** to apply changes without closing Terminal Properties, click **OK** to apply changes and close Terminal Properties, or click **Cancel** to close Terminal Properties without applying changes.

**Note** Your system administrator may have set a password in order to prevent you from making changes to Terminal Properties. In that case, some fields may be grayed out (inactive) until you enter the password through the **Terminal Properties > Security** dialog box. If no password has been set, you can make changes to any Terminal Properties field.

The table on the next page describes the settings and how to change them.

For complete information about Terminal Properties, see the *NCD ThinSTAR Terminal Properties Reference*.

<b>Using Terminal Properties</b>	
<b>Setting</b>	<b>How to Change in Terminal Properties</b>
Audio	<p>Change audio settings in the <b>Management &gt; Audio</b> tab.</p> <ul style="list-style-type: none"> <li>■ Speaker volume—Slide the tab to set the volume.</li> <li>■ Speaker on/off—Check or uncheck <b>Mute</b> to turn the speaker on or off.</li> <li>■ Test the speaker—Click <b>Test</b> to test the current speaker settings, after clicking <b>Apply</b>.</li> <li>■ Microphone (if supported)—Check or uncheck <b>Enable</b> to enable or disable the microphone.</li> </ul>
Citrix ICA Client global attributes	<p>On the <b>Management &gt; Clients</b> tab, display the Global ICA Client Settings dialog box by selecting Citrix ICA Client and clicking <b>Configure</b>.</p>
Connection client configuration	<p>Configure clients in the <b>Management &gt; Clients</b> tab.</p> <ul style="list-style-type: none"> <li>■ Specify the default client by selecting a client from the <b>Set Default Client</b> list.</li> <li>■ Configure a client's global characteristics (for example, the Citrix ICA Client) by selecting the client from the <b>Configure Clients</b> list and clicking <b>Configure Client</b>.</li> </ul>
Connection hot keys	<p>To enable or disable connection hot keys, use the <b>Management &gt; Hotkeys</b> tab. Check to enable, uncheck to disable.</p>
Connection Manager configuration	<p>Display or hide the Connection Manager's <b>Configure</b> tab in the <b>Management &gt; Clients</b> tab by checking or unchecking <b>Display NCD ThinSTAR Connection Manager's Configure Tab</b>.</p>
DHCP IP address assignment	<p>On the Network tab, select <b>Obtain an IP address from a DHCP server</b>.</p>



<b>Using Terminal Properties</b> <i>(continued)</i>	
<b>Setting</b>	<b>How to Change in Terminal Properties</b>
IP address assignment method	On the Network tab, select <b>Specify an IP Address</b> and complete the data entry fields if DHCP is not set up on the network. You must at least enter the terminal's address in the <b>IP Address</b> field and subnet mask in the Subnet Mask field.
Keyboard character repeat	Select the character repeat delay and repeat rate in the <b>Input</b> tab.
Keyboard locale	Select the locale of your keyboard in the <b>Input</b> tab.
Monitor desktop area and refresh frequency	On the <b>Display</b> tab, select the desired desktop area and click the <b>Test</b> button. If the test pattern appears correctly, click <b>OK</b> to apply the setting.  Note You cannot test the new setting if you are using the DDC setting.
Monitor power states	On the <b>Management &gt; Power</b> tab, the <b>Monitor is Energy Star Compliant</b> is selected if the terminal determined your monitor has controllable power states. The <b>Suspend Timeout</b> occurs the selected minutes after any <b>Display &gt; Screen Saver</b> occurs. The <b>Powerdown Timeout</b> occurs the selected minutes after the <b>Suspend Timeout</b> occurs.
Mouse pointer speed	In the <b>Management &gt; Pointer</b> tab, you can adjust how fast the pointer moves relative to the Mouse. To test, click <b>Apply</b> .  In the event that you have set the speed to be too fast or too slow, the speed will reset to the default.

<b>Using Terminal Properties</b> <i>(continued)</i>	
<b>Setting</b>	<b>How to Change in Terminal Properties</b>
Mouse right or left handedness	<p>Make these adjustments on the Terminal Server host through <b>Start &gt; Settings &gt; Control Panel &gt; Mouse</b>, if using Windows NT or MetaFrame. If using WinFrame, go to <b>Main &gt; Control Panel &gt; Pointing Device</b>.</p> <p>Make this change in Terminal Properties (on the <b>Input</b> tab) only when using connection clients that do not connect to Terminal Server hosts.</p>
Name resolution	<p>On the <b>Network</b> tab, select <b>Specify an IP Address</b> and display the Advanced Network Settings dialog box by clicking <b>Advanced Network</b>. Check or uncheck the check boxes and specify the data entry fields as needed.</p>
Network connection type—LAN or dial-up	<p>To select either a LAN connection or a dial-up connection, use the <b>Management &gt; Network &gt; Type</b> tab. Check <b>LAN Connection</b> or <b>Dial-Up Connection</b>. Click <b>OK</b>. The change does not take effect until the terminal restarts.</p>
Network speed	<p>If you select a network connection in the <b>Management &gt; Network &gt; Type</b> tab, you can set the network speed in the same tab.</p> <p>Note Do not set your network speed to over 10Mbps unless you know you have a 100Mbps network. The NCD ThinSTAR 200 terminal does not support this option.</p>
Network test	<p>Test the connection to a host in the <b>Management &gt; Network &gt; Diagnostics</b> tab by entering the name or IP address of the host in <b>Host to Ping</b> and clicking <b>Ping</b>.</p>
Screen saver	<p>In the <b>Display</b> tab, you can enable or disable the screen saver by checking or unchecking <b>Enable Screen Saver</b>. To set the delay time before the screen saver comes on, select the number of minutes from the <b>Wait</b> list.</p>

<b>Using Terminal Properties</b> <i>(continued)</i>	
<b>Setting</b>	<b>How to Change in Terminal Properties</b>
Software upgrades over dial-up connections	To enable or disable upgrades over dial-up connections, use the <b>Management &gt; Network &gt; Type</b> tab. Check or uncheck the <b>Allow Upgrades Over Dial-Up Connections</b> option.
Software upgrade server	Use the <b>Management &gt; Server</b> tab. Enter the IP address or host name (as an FQDN) for the host providing TMS (Terminal Management Service) to the terminal.
Terminal identification	To name a terminal for inventory asset accounting, see <b>Extensions &gt; Terminal Identification</b> .
Terminal locale	Use the <b>Management &gt; Clients</b> tab. Select the locale from the drop-down list click <b>OK</b> .  If you select French, you can make RDP connections only to French Terminal Servers.
Terminal hardware and software information	To view information about the terminal hardware and software, network settings, graphics, and terminal model, select the <b>Inventory</b> tab.

<b>Using Terminal Properties</b> <i>(continued)</i>	
<b>Setting</b>	<b>How to Change in Terminal Properties</b>
Terminal Properties password	<p>From the <b>Security</b> tab, you can set, enter, change, or delete the password. You can also select tabs and fields for password protection.</p> <ul style="list-style-type: none"> <li>■ If a password is not set, enter a password in the <b>Create Password</b> tab in the <b>Password</b> field, and confirm it by entering the same password in the <b>Confirm password</b> field. Click <b>Create</b>.</li> <li>■ To change protected settings when a password is set, enter the password in the <b>Enter Password</b> tab in the <b>Password</b> field, and click <b>Enter</b>.</li> <li>■ To change the password, enter the old password in the <b>Change Password</b> tab in the <b>Old password</b> field. Enter the new password in the <b>New password</b> field and confirm it by entering the same password in the <b>Confirm password</b> field. Click <b>Change</b>.</li> <li>■ To delete the password, enter the password in the <b>Change Password</b> tab in the <b>Old password</b> field and click <b>Change</b>. Click <b>Apply</b>.</li> <li>■ To select tabs and fields to be password-protected, set a password then use the <b>Security &gt; Terminal Properties Access</b> tab. Select items from the Properties list and click <b>Protect</b> or <b>Unprotect</b>. To reset to the default list of protected items, click <b>Set All to Defaults</b>.</li> </ul>

<b>Using Terminal Properties</b> <i>(continued)</i>	
<b>Setting</b>	<b>How to Change in Terminal Properties</b>
Touchscreen	<p>From the <b>Management &gt; Touchscreen</b> tab, you can enable the Elo Touchscreen, if your terminal supports it.</p> <p>If <b>Enable</b> is checked, the touchscreen is active. You can select the communications port to which it is attached with the <b>Select</b> drop-down list.</p> <p>You can calibrate the touchscreen with the <b>Calibrate</b> button.</p> <p>If Touchscreen is enabled, Right-handed and Left-handed Mouse buttons on the <b>Input</b> tab and Pointer speed on the <b>Management &gt; Pointer</b> tab are disabled.</p>



# Index

## A

- addresses
  - assigning 29
  - problems 19
- audio, configuring 28

## C

- cable connection,
  - problems 19
- clients
  - configuring 28
  - definition 2
- components, hardware
  - and software 31
- Configure tab,
  - Connection Manager 28
- configuring the terminal 27
- Connection Manager
  - Configure tab 28
  - initial display 2
  - procedure 5
  - using 12

- connections
  - autostart 14, 17
  - creating new 7, 13
  - default 14
  - deleting 25
  - dial-up 11
  - editing 13
  - hot keys 28
  - multiple 15
  - starting 13
  - stopping 13

## D

- DHCP 29
- dial-up connections 11, 30
- disconnecting vs. logging off 17
- display problems 21

## E

- error messages 21

## H

- hot keys, multiple connections 24

## I

- ICA connections
  - configuring the client 28
  - creating 9
  - modifying 25
  - wizard 9

## K

- keyboard
  - character repeat 29
  - locale 29

## L

- LEDs, front panel 22
- locale
  - keyboard 29
  - terminal 31
- logging off 16
- logging on 3

## M

- microphone 28
- monitor
  - desktop area and refresh frequency 29
  - screen saver 30
- monitor power states 29

mouse  
  pointer speed 29  
  right/left  
    handedness 30, 33

### N

name resolution 30  
network  
  dial-up connection 30  
  speed 30  
  testing 30  
Network dialog box 18

### P

password, Terminal  
  Properties 32  
pointer, speed 29  
published application 9

### R

RDP connections  
  creating 7  
  modifying connection  
    properties 13, 25  
  modifying network  
    properties 13, 26

### S

safe boot mode 21  
screen  
  blank 21  
  unreadable 21  
screen saver 30  
Setup Wizard  
  initial display 2  
  procedure 6

software  
  components and  
    versions 31  
  upgrading 31  
speaker 28  
specifications 33

### T

terminal  
  components,  
    viewing 31  
  locale 31  
Terminal Properties  
  accessing 27  
  password for 32  
thin client 2  
touchscreen 33  
troubleshooting  
  addresses 19  
  cable connection 19  
  front panel LEDs  
    blink 22  
  screens 21  
  terminal network  
    cable 18  
  upgrades 20

### U

upgrades  
  message 20  
  over dial-up  
    connection 31  
  server for 31

### W

WBT 1  
WTS Connection  
  Wizard 7